

PURPOSE:
 INSTALL NEW HARBOR
 FACILITIES WITHIN THE HARBOR
 BASIN

DATUM: MLLW = 0'-0"

LOCATION: SEC8, T45S, R58W
 SEWARD MERIDAN
 LAT: 56.3041N
 LONG: 158.3792W

**LOCATION AND
 VICINITY MAP**

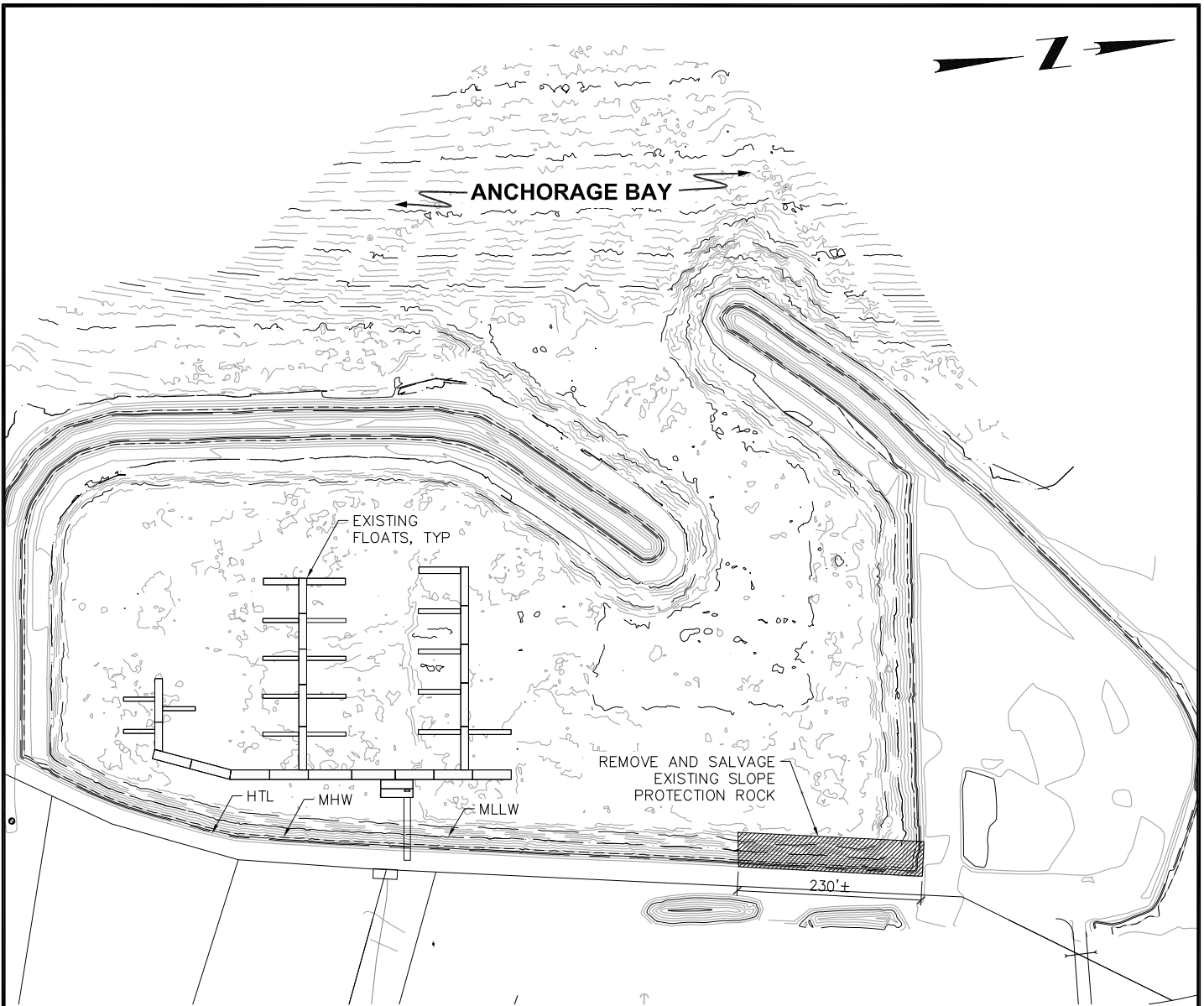
CITY OF CHIGNIK
 PO BOX 110
 CHIGNIK, AK 99564
 907-749-2280

**CITY OF CHIGNIK
 SMALL BOAT HARBOR**

POA-2005-1406-M2

AT: ANCHORAGE BAY
 IN: CHIGNIK, ALASKA

APRIL 2015 SHEET **1** of **12**



TIDAL DATA:

HTL..... +11.2
 MHW..... +8.1
 MLLW..... +0.0

PURPOSE:
 INSTALL NEW HARBOR
 FACILITIES WITHIN THE HARBOR
 BASIN

DATUM: MLLW = 0'-0"

LOCATION: SEC8, T45S, R58W
 SEWARD MERIDAN
 LAT: 56.3041N
 LONG: 158.3792W

**EXISTING SITE
 PLAN**

CITY OF CHIGNIK
 PO BOX 110
 CHIGNIK, AK 99564
 907-749-2280

**CITY OF CHIGNIK
 SMALL BOAT HARBOR**

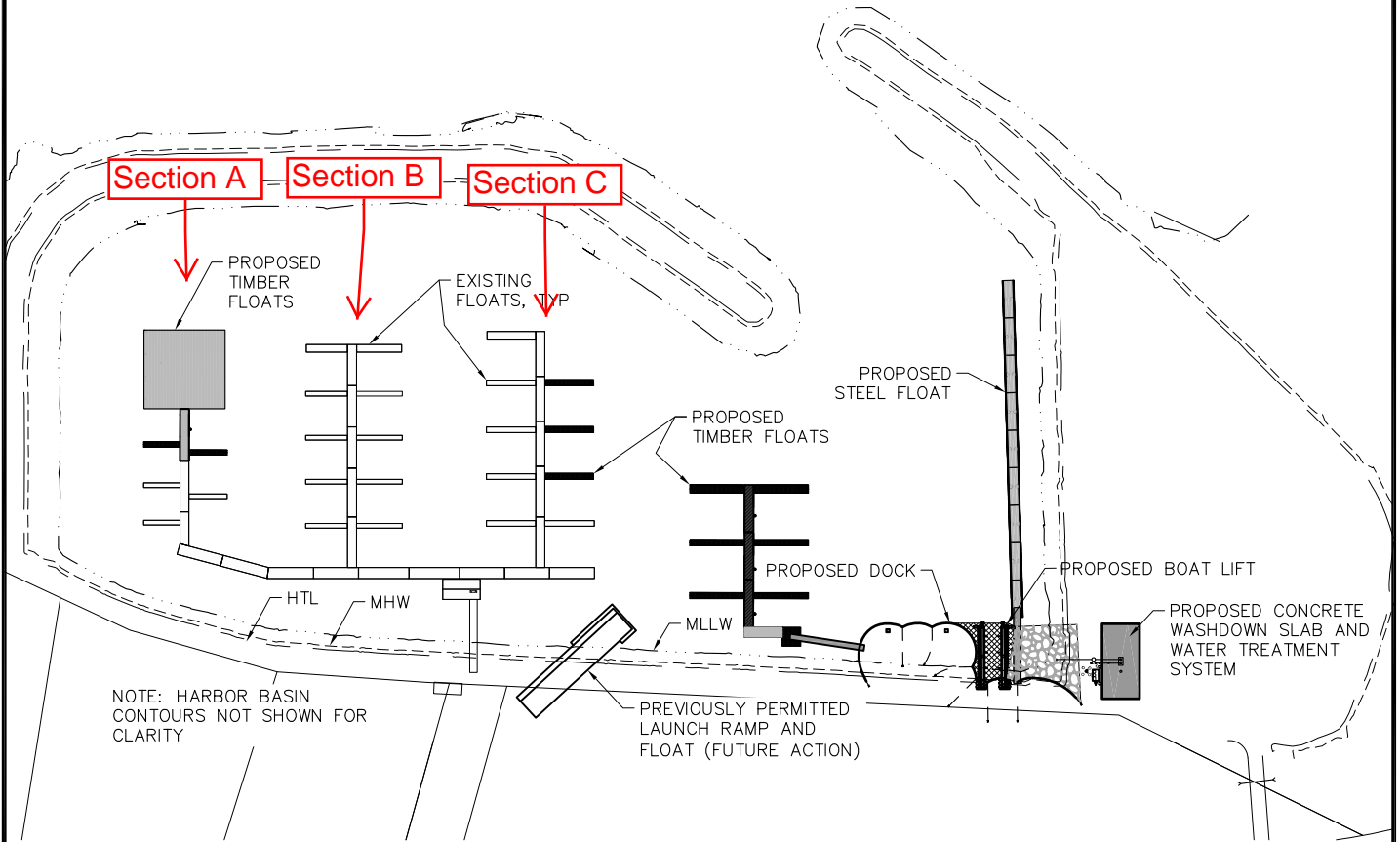
POA-2005-1406-M2

AT: ANCHORAGE BAY
 IN: CHIGNIK, ALASKA



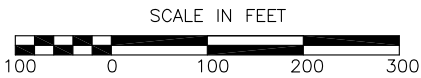
| PROPOSED PILE QUANTITIES | |
|--------------------------|----------|
| DESCRIPTION | QUANTITY |
| 16"Ø STEEL PIPE | 4 EA |
| 18"Ø STEEL PIPE | 34 EA |
| 24"Ø STEEL PIPE | 14 EA |
| 12"Ø TIMBER | 6 EA |
| SHEET PILE | 430 EA |

ANCHORAGE BAY



TIDAL DATA:

HTL..... +11.2
 MHW..... +8.1
 MLLW..... +0.0



PURPOSE:
 INSTALL NEW HARBOR
 FACILITIES WITHIN THE HARBOR
 BASIN

DATUM: MLLW = 0'-0"

LOCATION: SEC8, T45S, R58W
 SEWARD MERIDAN
 LAT: 56.3041N
 LONG: 158.3792W

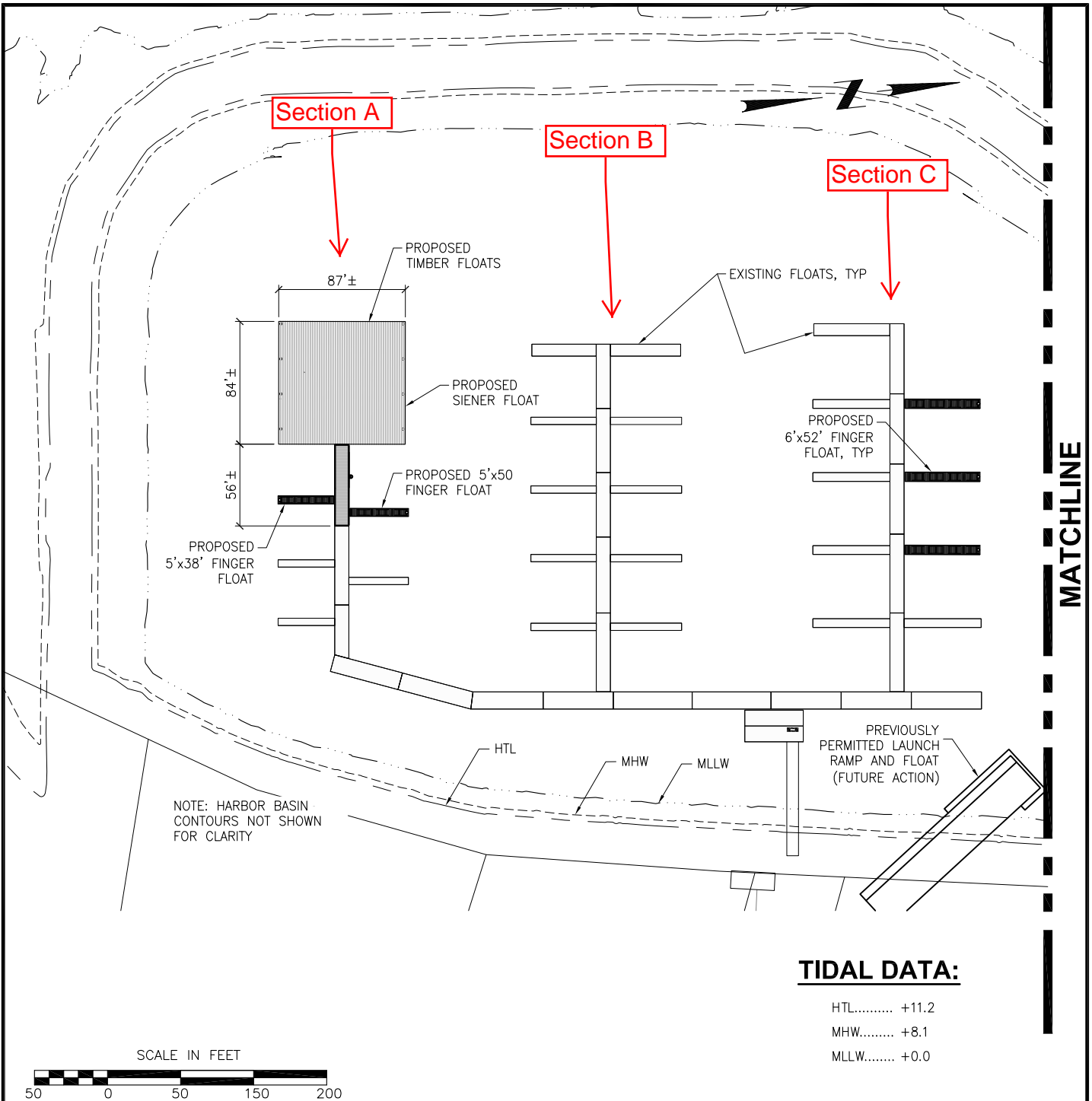
**PROPOSED
 SITE PLAN**

CITY OF CHIGNIK
 PO BOX 110
 CHIGNIK, AK 99564
 907-749-2280

**CITY OF CHIGNIK
 SMALL BOAT HARBOR**

POA-2005-1406-M2

AT: ANCHORAGE BAY
 IN: CHIGNIK, ALASKA



PURPOSE:
 INSTALL NEW HARBOR
 FACILITIES WITHIN THE HARBOR
 BASIN

DATUM: MLLW = 0'-0"

LOCATION: SEC8, T45S, R58W
 SEWARD MERIDAN
 LAT: 56.3041N
 LONG: 158.3792W

**PROPOSED
 SITE PLAN**

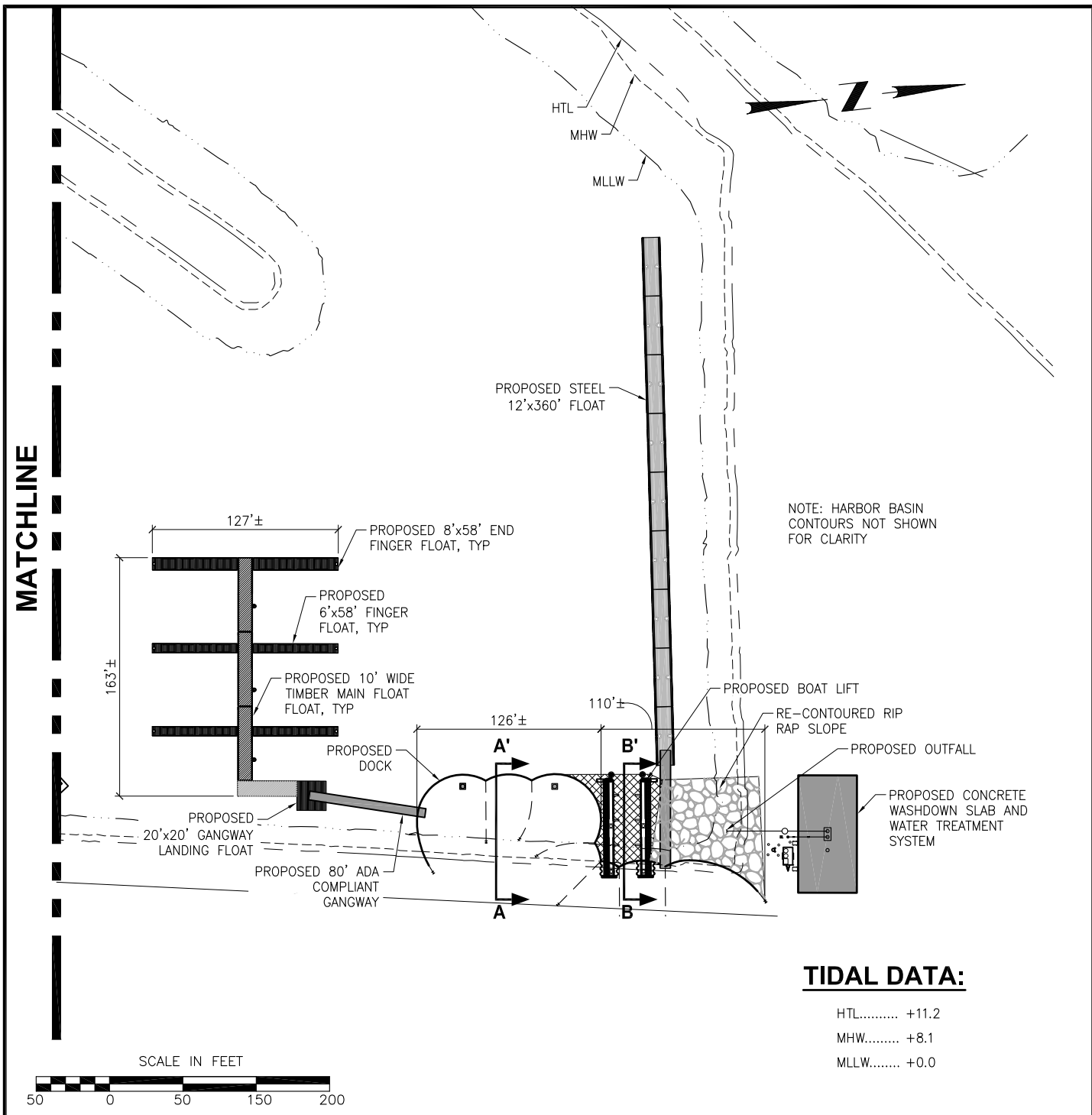
CITY OF CHIGNIK
 PO BOX 110
 CHIGNIK, AK 99564
 907-749-2280

**CITY OF CHIGNIK
 SMALL BOAT HARBOR**

POA-2005-1406-M2

AT: ANCHORAGE BAY
 IN: CHIGNIK, ALASKA

APRIL 2015 SHEET **4** of **12**



TIDAL DATA:

HTL..... +11.2
 MHW..... +8.1
 MLLW..... +0.0

PURPOSE:
 INSTALL NEW HARBOR
 FACILITIES WITHIN THE HARBOR
 BASIN

DATUM: MLLW = 0'-0"

LOCATION: SEC8, T45S, R58W
 SEWARD MERIDAN
 LAT: 56.3041N
 LONG: 158.3792W

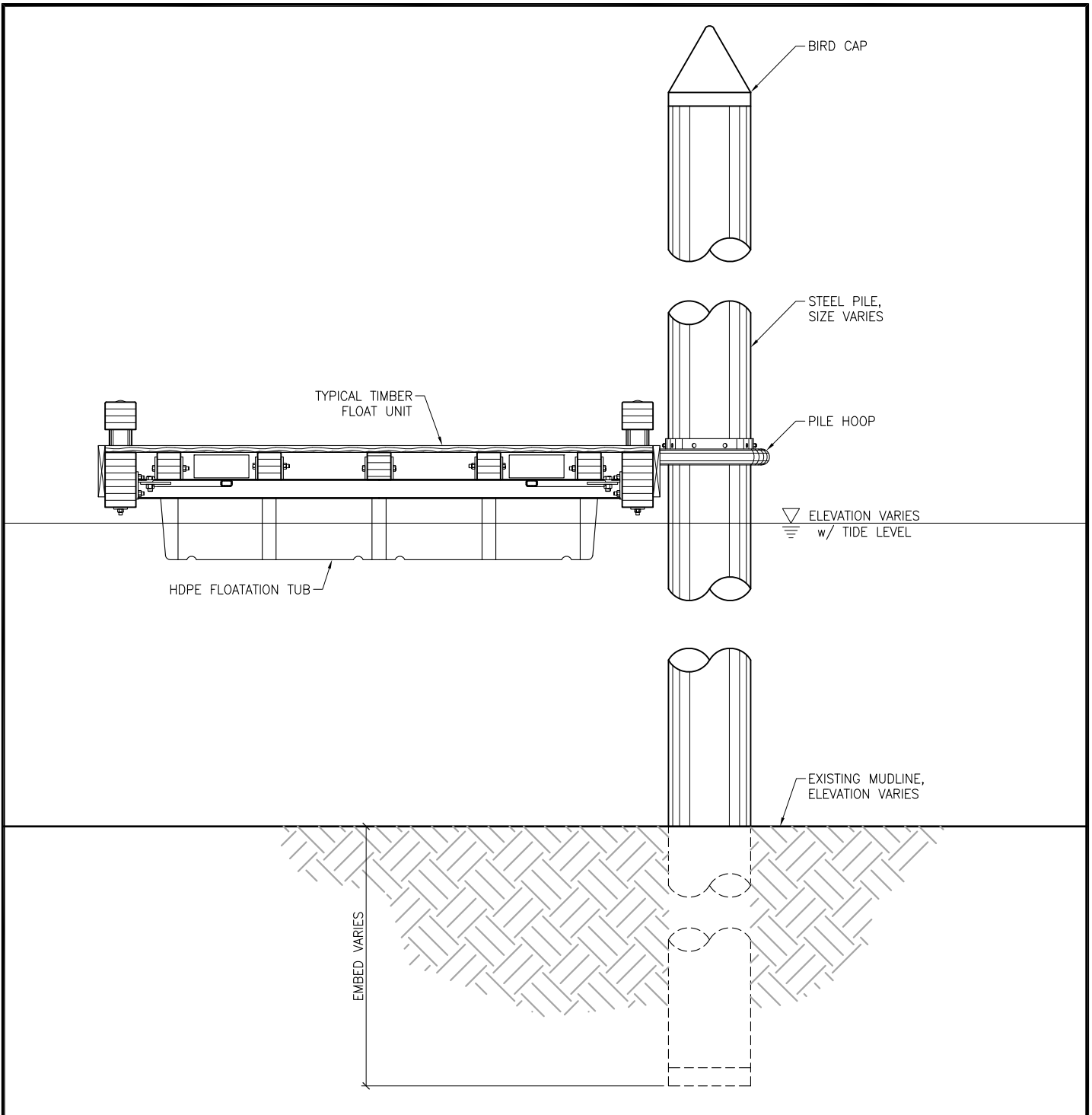
**PROPOSED
 SITE PLAN**

CITY OF CHIGNIK
 PO BOX 110
 CHIGNIK, AK 99564
 907-749-2280

**CITY OF CHIGNIK
 SMALL BOAT HARBOR**

POA-2005-1406-M2

AT: ANCHORAGE BAY
 IN: CHIGNIK, ALASKA



PURPOSE:
 INSTALL NEW HARBOR
 FACILITIES WITHIN THE HARBOR
 BASIN

DATUM: MLLW = 0'-0"

LOCATION: SEC8, T45S, R58W
 SEWARD MERIDAN
 LAT: 56.3041N
 LONG: 158.3792W

**TIMBER FLOAT
 SECTION**

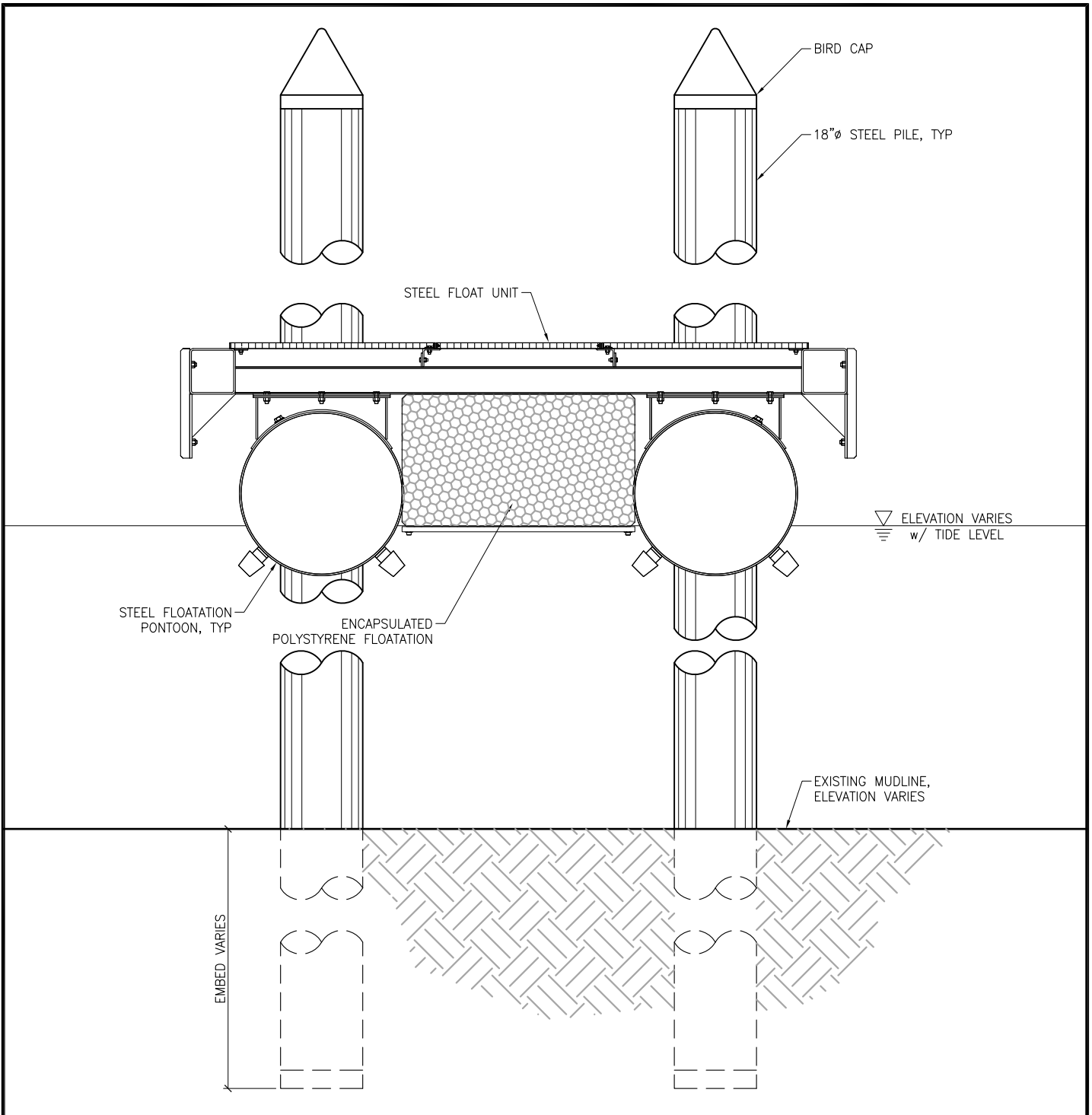
CITY OF CHIGNIK
 PO BOX 110
 CHIGNIK, AK 99564
 907-749-2280

**CITY OF CHIGNIK
 SMALL BOAT HARBOR**

POA-2005-1406-M2

AT: ANCHORAGE BAY
 IN: CHIGNIK, ALASKA

APRIL 2015 SHEET **6** of **12**



PURPOSE:
 INSTALL NEW HARBOR
 FACILITIES WITHIN THE HARBOR
 BASIN

DATUM: MLLW = 0'-0"

LOCATION: SEC8, T45S, R58W
 SEWARD MERIDAN
 LAT: 56.3041N
 LONG: 158.3792W

**STEEL FLOAT
 SECTION**

CITY OF CHIGNIK
 PO BOX 110
 CHIGNIK, AK 99564
 907-749-2280

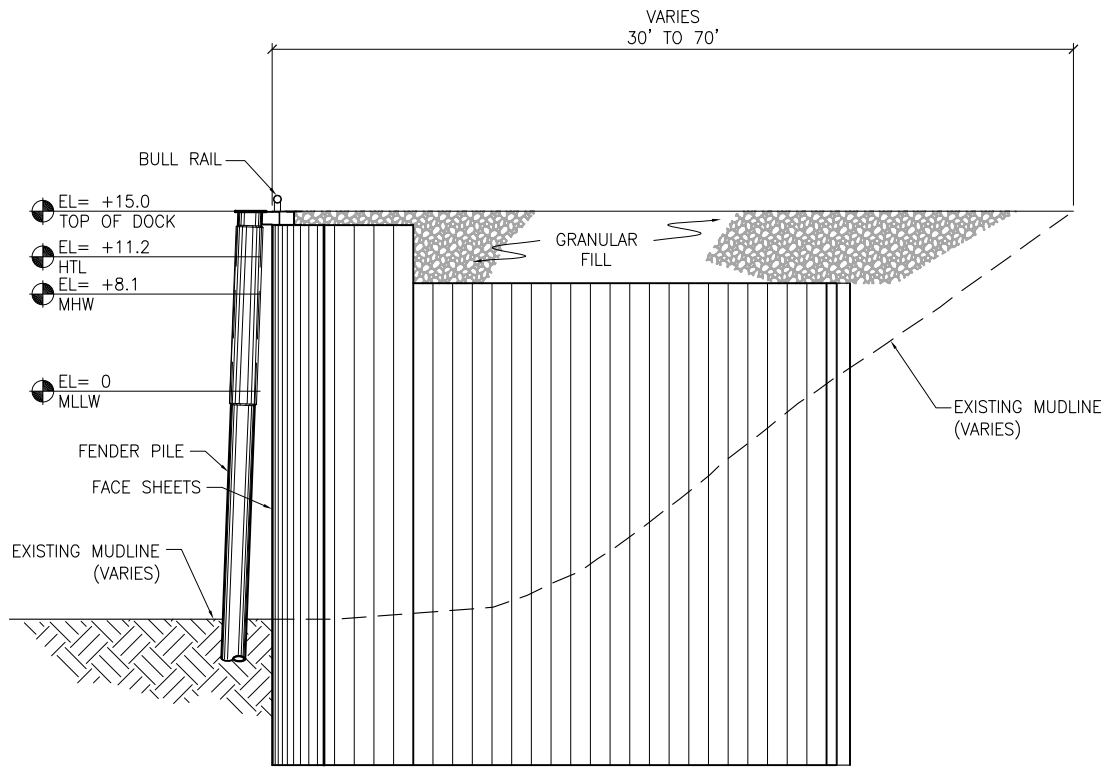
**CITY OF CHIGNIK
 SMALL BOAT HARBOR**

POA-2005-1406-M2

AT: ANCHORAGE BAY
 IN: CHIGNIK, ALASKA

APRIL 2015 SHEET **7** of **12**

| ESTIMATED QUANTITIES | |
|--------------------------|-----------|
| DESCRIPTION | AMOUNT |
| GRAVEL FILL BELOW MHW | 7,200 CY |
| GRAVEL FILL BELOW HTL | 7,600 CY |
| TOTAL GRAVEL FILL | 8,700 CY |
| RIP RAP BELOW MHW | 460 CY |
| RIP RAP BELOW HTL | 520 CY |
| TOTAL RIP RAP | 600 CY |
| FOOTPRINT AREA BELOW HTL | 0.34 ACRE |



SHEET PILE DOCK SECTION A-A'
NTS

PURPOSE:
INSTALL NEW HARBOR
FACILITIES WITHIN THE HARBOR
BASIN

DATUM: MLLW = 0'-0"

LOCATION: SEC8, T45S, R58W
SEWARD MERIDAN
LAT: 56.3041N
LONG: 158.3792W

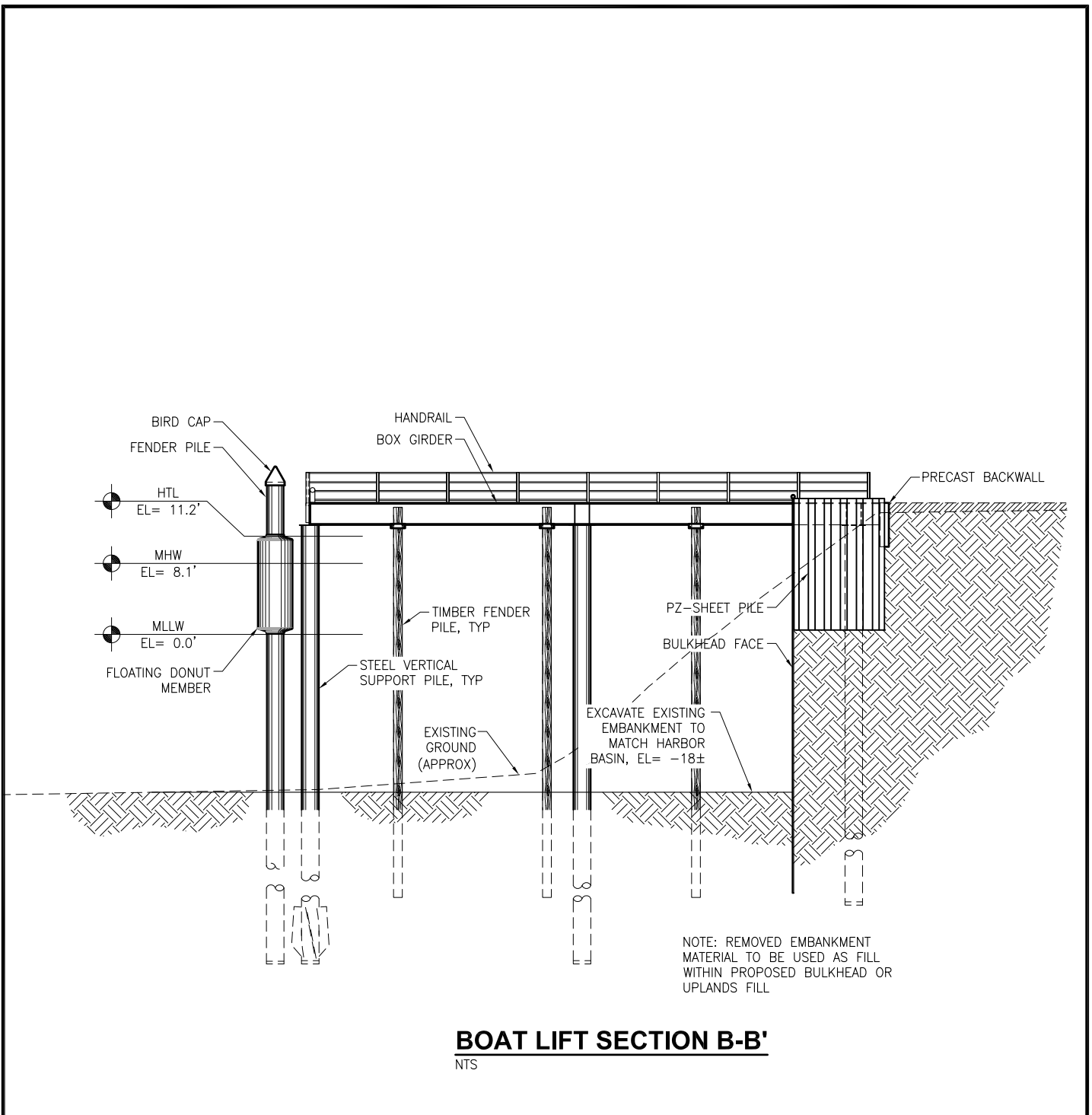
TYPICAL SECTION
SHEET PILE FILL
DOCK

CITY OF CHIGNIK
PO BOX 110
CHIGNIK, AK 99564
907-749-2280

CITY OF CHIGNIK
SMALL BOAT HARBOR

POA-2005-1406-M2

AT: ANCHORAGE BAY
IN: CHIGNIK, ALASKA



PURPOSE:
INSTALL NEW HARBOR
FACILITIES WITHIN THE HARBOR
BASIN

DATUM: MLLW = 0'-0"

LOCATION: SEC8, T45S, R58W
SEWARD MERIDAN
LAT: 56.3041N
LONG: 158.3792W

**BOAT LIFT
SECTION**

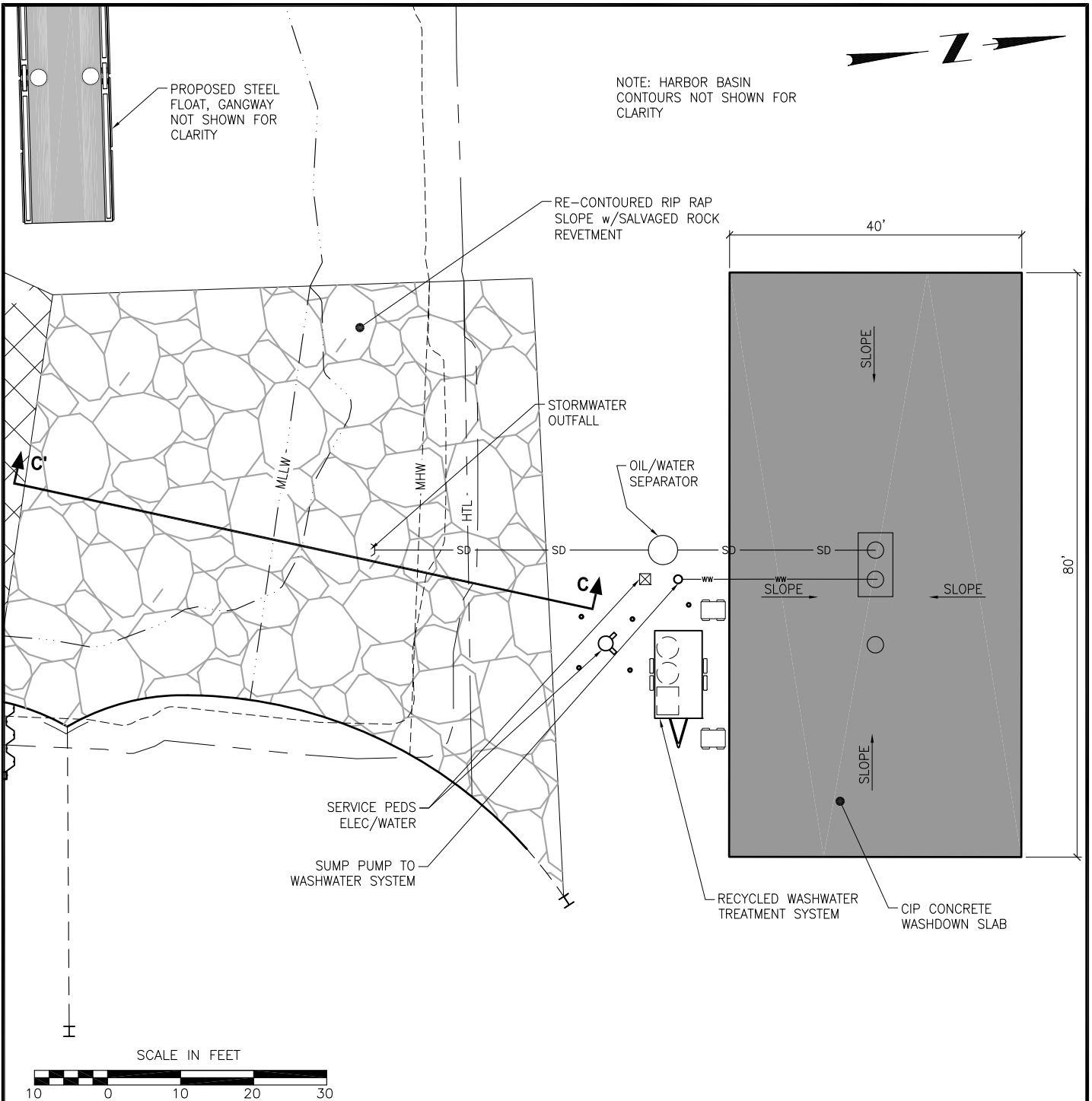
CITY OF CHIGNIK
PO BOX 110
CHIGNIK, AK 99564
907-749-2280

**CITY OF CHIGNIK
SMALL BOAT HARBOR**

POA-2005-1406-M2

AT: ANCHORAGE BAY
IN: CHIGNIK, ALASKA

APRIL 2015 SHEET **9** of **12**



PURPOSE:
 INSTALL NEW HARBOR
 FACILITIES WITHIN THE HARBOR
 BASIN

DATUM: MLLW = 0'-0"

LOCATION: SEC8, T45S, R58W
 SEWARD MERIDAN
 LAT: 56.3041N
 LONG: 158.3792W

**PROPOSED WASH
 DOWN PAD SITE
 PLAN**

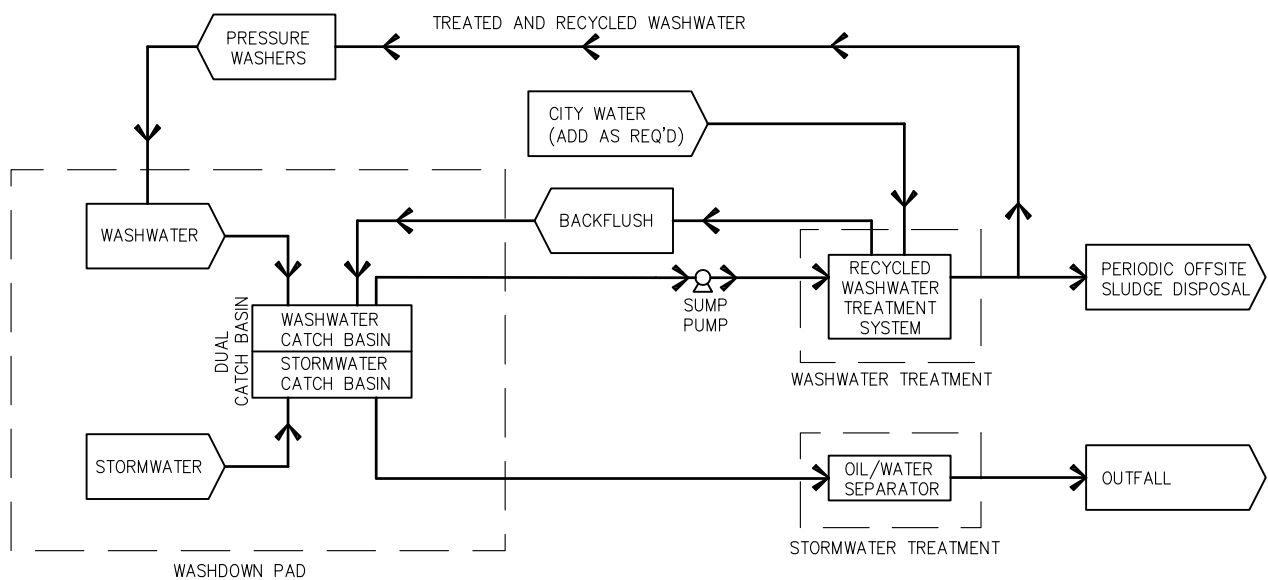
CITY OF CHIGNIK
 PO BOX 110
 CHIGNIK, AK 99564
 907-749-2280

**CITY OF CHIGNIK
 SMALL BOAT HARBOR**

POA-2005-1406-M2

AT: ANCHORAGE BAY
 IN: CHIGNIK, ALASKA

APRIL 2015 SHEET **10** of **12**



FLOW DIAGRAM

NTS

PURPOSE:
INSTALL NEW HARBOR
FACILITIES WITHIN THE HARBOR
BASIN

DATUM: MLLW = 0'-0"

LOCATION: SEC8, T45S, R58W
SEWARD MERIDAN
LAT: 56.3041N
LONG: 158.3792W

**WASHDOWN PAD
FLOW DIAGRAM**

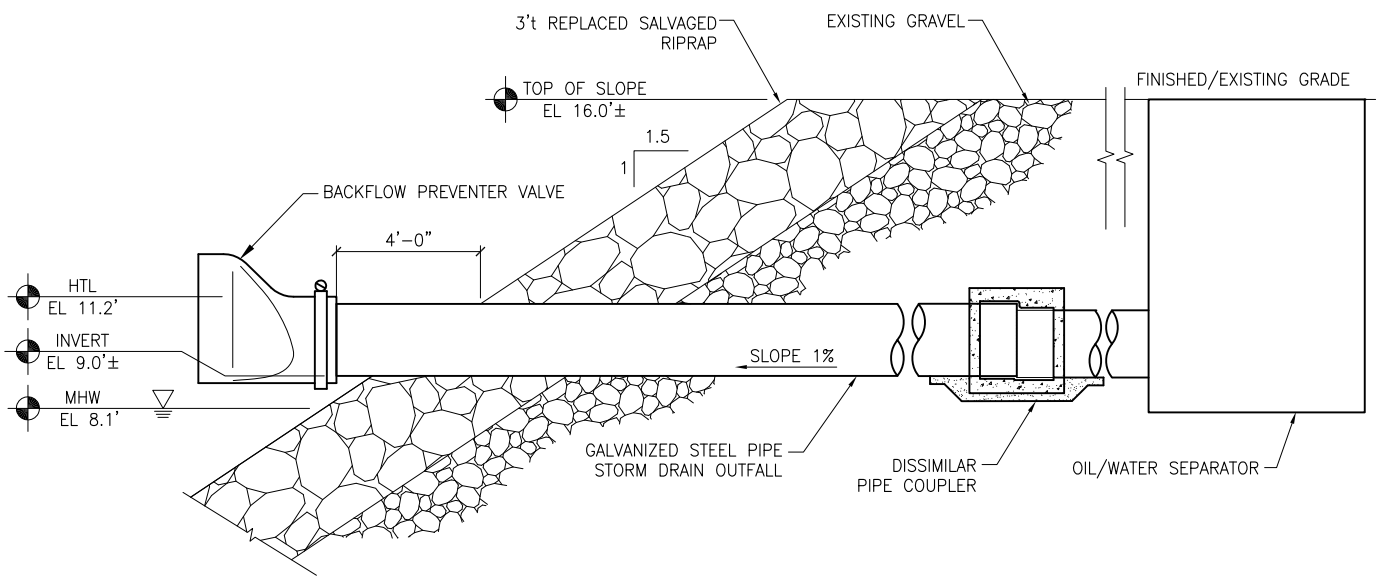
CITY OF CHIGNIK
PO BOX 110
CHIGNIK, AK 99564
907-749-2280

**CITY OF CHIGNIK
SMALL BOAT HARBOR**

POA-2005-1406-M2

AT: ANCHORAGE BAY
IN: CHIGNIK, ALASKA

APRIL 2015 SHEET **11** of **12**



OUTFALL AND TRANSITION SECTION C-C'

NTS

PURPOSE:
INSTALL NEW HARBOR
FACILITIES WITHIN THE HARBOR
BASIN

DATUM: MLLW = 0'-0"

LOCATION: SEC8, T45S, R58W
SEWARD MERIDAN
LAT: 56.3041N
LONG: 158.3792W

OUTFALL SECTION

CITY OF CHIGNIK
PO BOX 110
CHIGNIK, AK 99564
907-749-2280

CITY OF CHIGNIK SMALL BOAT HARBOR

POA-2005-1406-M2

AT: ANCHORAGE BAY
IN: CHIGNIK, ALASKA

APRIL 2015 SHEET **12** of **12**